

Dental Crown Composite Inlays And Onlays Restoration Customized Shape

Our Product Introduction

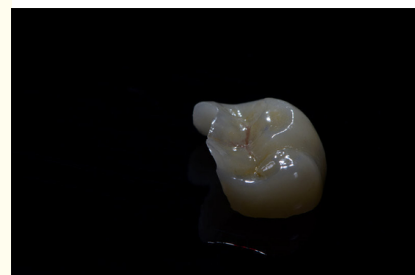
for more products please visit us on adschinadentallab.com

Basic Information



Product Specification

- Shape: Customizable
- Durability: High
- Ease Of Placement: Easy
- Color: White
- Aesthetics: Natural-looking
- Conservation Of Tooth Structure: Minimal
- Adhesion: Strong
- Resistance To Staining: Excellent
- Highlight: Dental composite inlays and onlays, Customized composite inlays and onlays, crown inlay onlay Restoration



Product Description

Product Description:

The Dental Inlay Onlay Restoration product is designed to provide a precise fit, ensuring maximum comfort and functionality for the patient. The restoration process involves the use of dental composite inlays, which are customized to fit the unique shape and size of the damaged tooth. This results in a strong and secure adhesion that can withstand the forces of biting and chewing.

In addition to its functional benefits, our Dental Inlay Onlay Restoration product also offers natural-looking aesthetics that blend seamlessly with the surrounding teeth. The ceramic material is carefully selected to match the color and texture of natural teeth, providing a discreet and seamless restoration.

Our Dental Inlay Onlay Restoration product is the ideal choice for patients who value both functionality and aesthetics. The high-quality ceramic material and precise fit ensure that the restoration will last for many years, providing a durable and reliable solution for damaged teeth. The use of dental composite inlays also ensures a strong and secure adhesion that can withstand the rigors of daily use.

Overall, our Dental Inlay Onlay Restoration product is a top-of-the-line solution for restoring damaged teeth. With its precise fit, natural-looking aesthetics, and high durability, it is the perfect choice for patients who want a long-lasting and reliable restoration.

Features:

Product Name: Dental Inlay Onlay Restoration

Fit: Precise

Material: Ceramic

Ease Of Placement: Easy

Shape: Customizable

Color: White

The Dental Inlay Onlay Restoration is a high-quality dental composite inlay that is designed to provide a precise fit. It is made from ceramic, which makes it durable and long-lasting. The ease of placement of this product makes it an ideal choice for dentists who want to provide their patients with a reliable and effective solution for their dental needs. The shape of the inlay is customizable to fit each patient's unique dental needs, and the white color of the inlay ensures a natural look and feel.

Technical Parameters:

Attribute	Description
Product Name	Dental Composite Inlay Onlay Restoration
Color	White
Aesthetics	Natural-looking
Durability	High
Longevity	Long-lasting
Shape	Customizable
Conservation Of Tooth Structure	Minimal
Ease Of Placement	Easy
Resistance To Staining	Excellent
Compatibility With Other Dental Materials	Compatible
Adhesion	Strong

Applications:

Dental composite inlays are an excellent option for those who want a natural-looking restoration for their teeth. The color of the inlay is white, which matches the color of the teeth, making it difficult to detect that there is a restoration in place. The resistance to staining of the ceramic material is excellent, which ensures that the inlay remains white and does not get discolored over time.

The dental composite inlay is suitable for a variety of dental applications and scenarios. It is an excellent option for those who have cavities or cracks in their teeth that need to be filled. It is also suitable for those who have damaged or decayed teeth that need to be restored. The dental composite inlay is also an excellent option for those who have chipped or broken teeth that need to be repaired.

The dental composite inlay is a popular choice among dentists and patients alike due to its strength, durability, and natural appearance. It is a reliable and long-lasting dental restoration that can last for many years with proper care and maintenance.

